

elevation, about a mile north-east of the summit of the West Highland railway, at Corroun station, from which the loch can be seen. The mountains rise to over 3000 feet both on the north-west and south-east. The former solitude is now relieved, since the mansion of Sir John Stirling Maxwell, Bart., has been built on the shore of the loch.

In form Loch Ossian is narrow, with its long axis slightly curved, and of nearly uniform breadth throughout. It is  $3\frac{1}{4}$  miles long, nearly

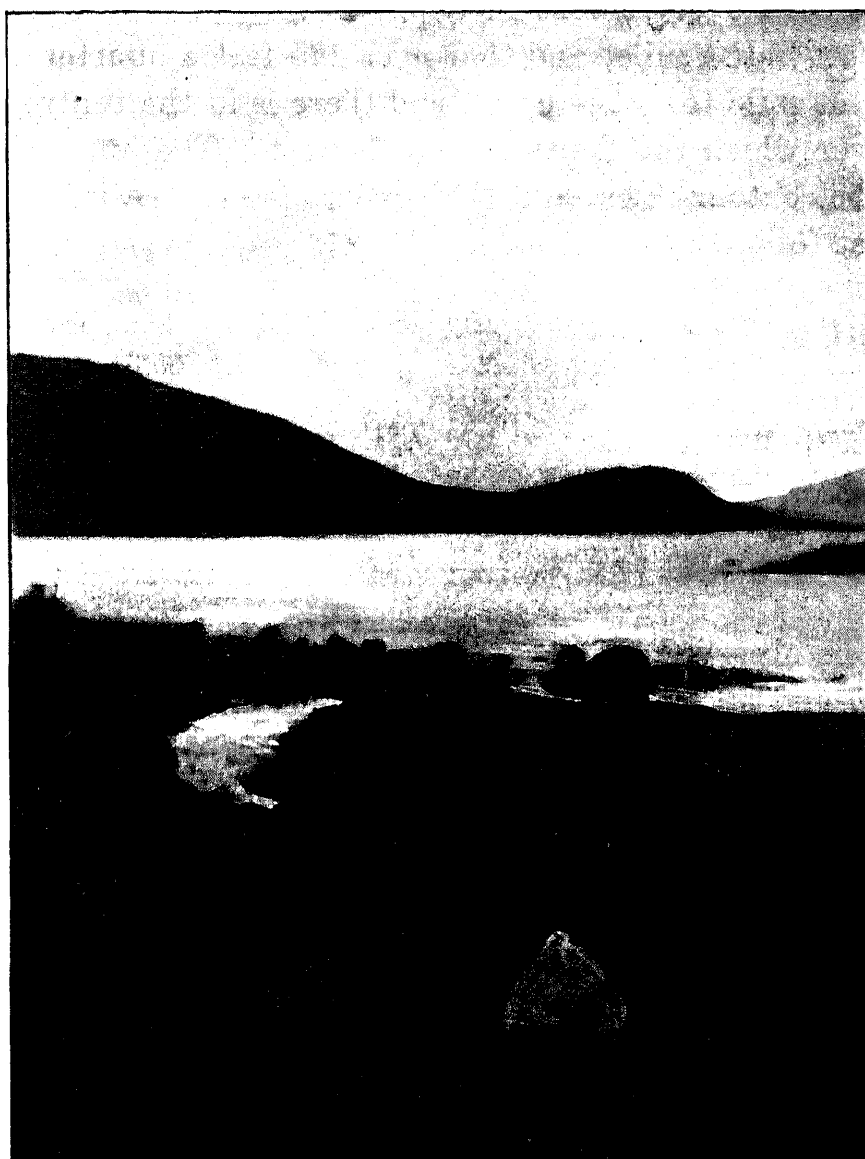


FIG. 55.—LOCH OSSIAN.

(*Photograph by Sir John Murray.*)

half a mile in greatest breadth, and has a mean breadth of about one-third of a mile. The greatest depth is 132 feet, and the mean depth 43 feet. It has a superficial area of just about a square mile, and a volume of 1224 millions of cubic feet. It drains an area of nearly  $10\frac{1}{2}$  square miles, receiving only mountain torrents from the surrounding hills, and flows out by the river Ossian into Loch Ghuilbinn,  $2\frac{1}{2}$  miles to the north. The loch was surveyed on May 14, 15, and 16, 1902, when the height of the water above sea-level was found to be 1268·7