

feet in height, separate it from the valley in which lies Lochan na h-Earba. Loch Laggan drains directly an area of 34 square miles, but since it receives the overflow from Loch Pattack and Lochan na h-Earba, its total drainage area is nearly 62 square miles. The principal stream entering the loch is the river Pattack, which drains Loch Pattack and a number of smaller lochs. The Allt Lowrag brings

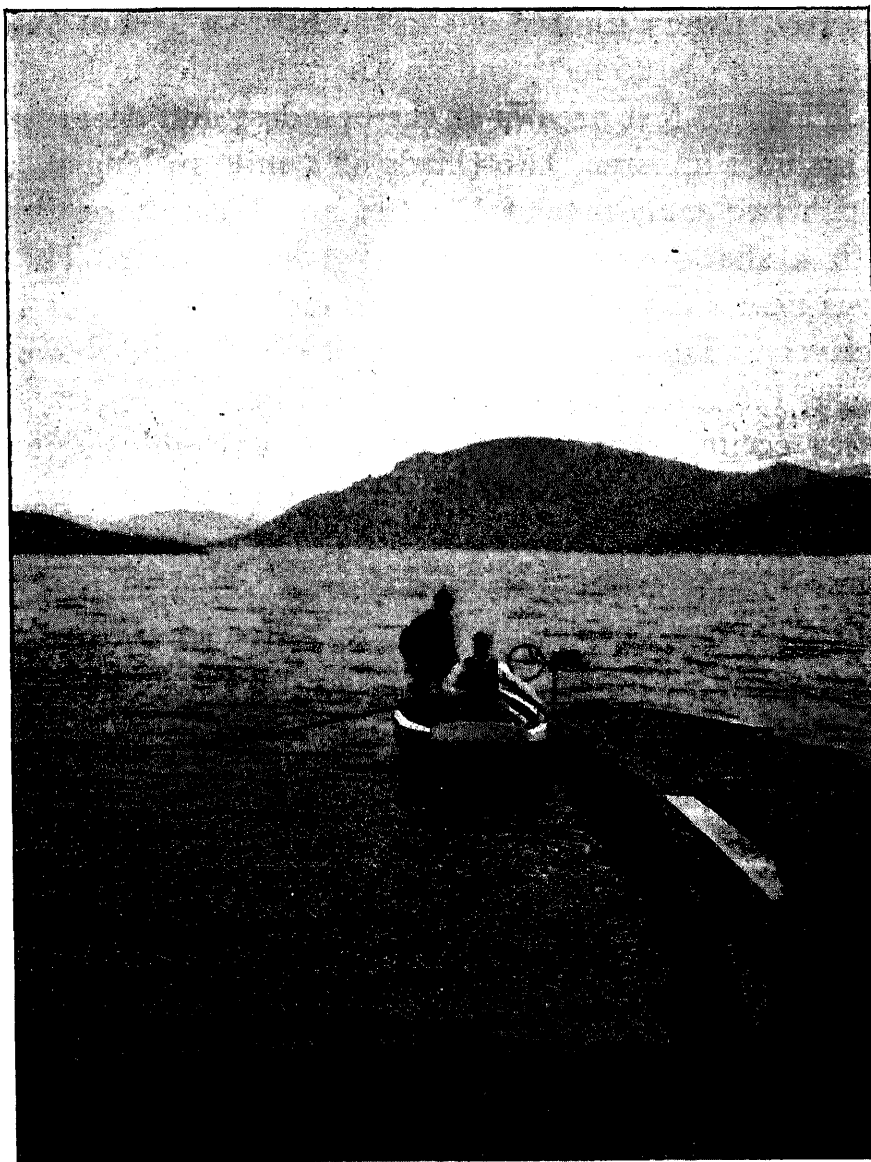


FIG. 54.—LOCH LAGGAN.

*(Photograph by Sir John Murray.)*

the overflow of Lochan na h-Earba. Near Aberarder, in the middle of the north shore, two large burns enter, and there are many smaller streams on this side. The river Spean issues from the loch, and flows into the Lochy close to Loch Lochy.

Contours are drawn for every 25 feet of depth. The bottom is so irregular that only the 25-feet and the 50-feet contours are continuous, and follow approximately the outline of the shore. All the others are much broken up. The 75-feet contour is broken into four distinct