

Loch Morar (see Plate XLIII.).—This is a large and beautiful loch, lying amid wild and magnificent scenery on the west coast of Inverness-shire, in the south-west portion of that county, immediately to the south of Loch Nevis, which is a sea-loch running inland for 12 miles from the Sound of Sleat. The west end of Loch Morar is about 3 miles from Arisaig, and $2\frac{1}{2}$ miles from Mallaig. Morar station, on the Mallaig branch of the West Highland Railway, is within a few hundred yards of the west end.

The loch is a little over $11\frac{1}{2}$ miles in length, and the maximum breadth is over $1\frac{1}{2}$ miles near the west end; the mean breadth is

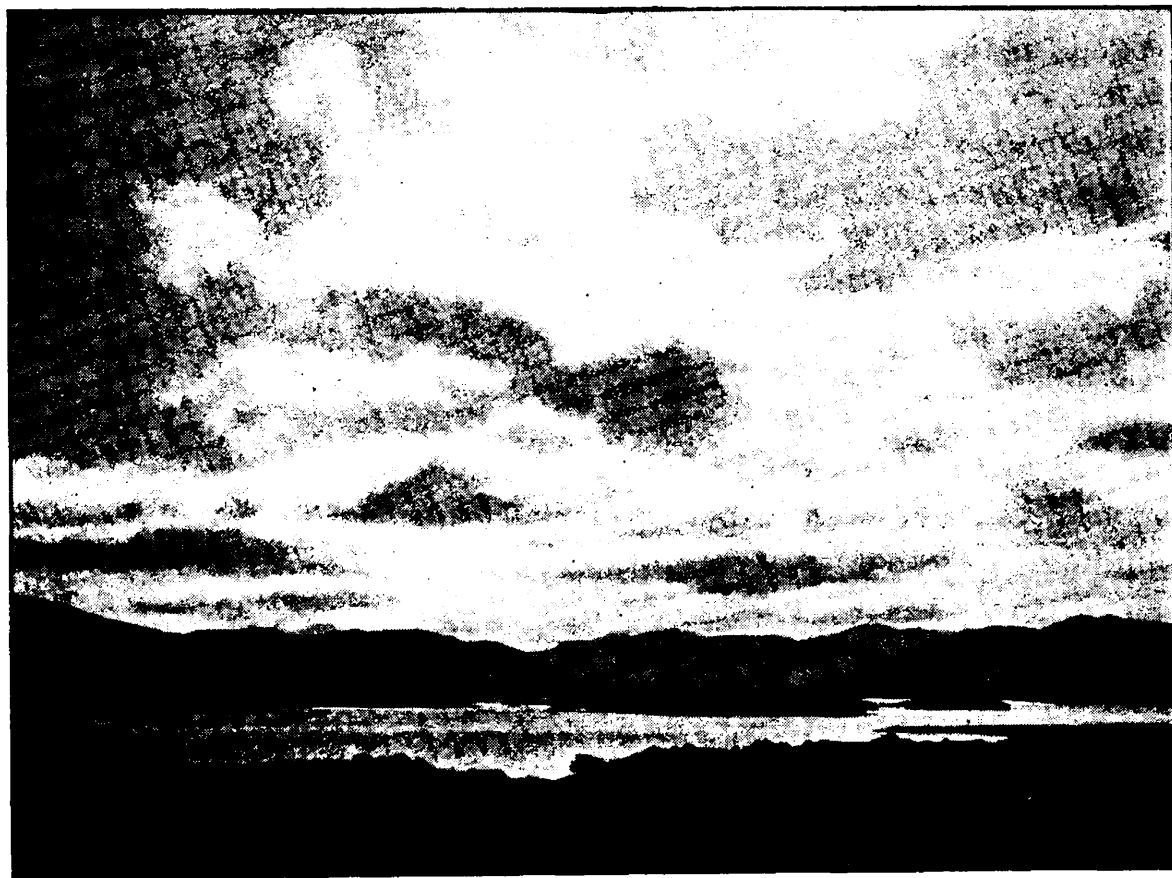


FIG. 33.—LOCH MORAR, LOOKING EAST FROM THE WEST END.

(Photograph by Mr. T. N. Johnston, M.B., C.M., F.R.S.E.)

nearly $\frac{9}{10}$ of a mile, or about $7\frac{1}{2}$ per cent. of the length. The area covered by the lake is 6596 acres, or nearly $10\frac{1}{3}$ square miles.

There are several islands, more or less richly covered with vegetation, at the west end of the loch (see Fig. 33), and parts of the surrounding land, especially on the north side, are fairly well wooded, all of which greatly adds to the beauty and picturesqueness of the scenery at this part, but as one proceeds eastwards towards the head of the loch the scenery becomes wilder, the vegetation more scanty, and the mountains on both sides of the loch rise higher and more steeply. At many places on the north shore they rise precipitously from the water's edge, and around the head of the loch they reach a height of fully 3000 feet.