

The temperature of the surface water near the boathouse, when commencing the survey at 2.45 p.m. on April 17, was  $50^{\circ}\cdot 8$  Fahr., but later on, out in the open water, the surface temperature was  $44^{\circ}\cdot 2$  Fahr.; on the 18th at noon the surface temperature near the shore was  $50^{\circ}\cdot 0$  Fahr., while in the bay to the north of the boathouse the temperature was  $46^{\circ}\cdot 0$  Fahr.

Lochan Beinn Caorach and some other small basins of water in

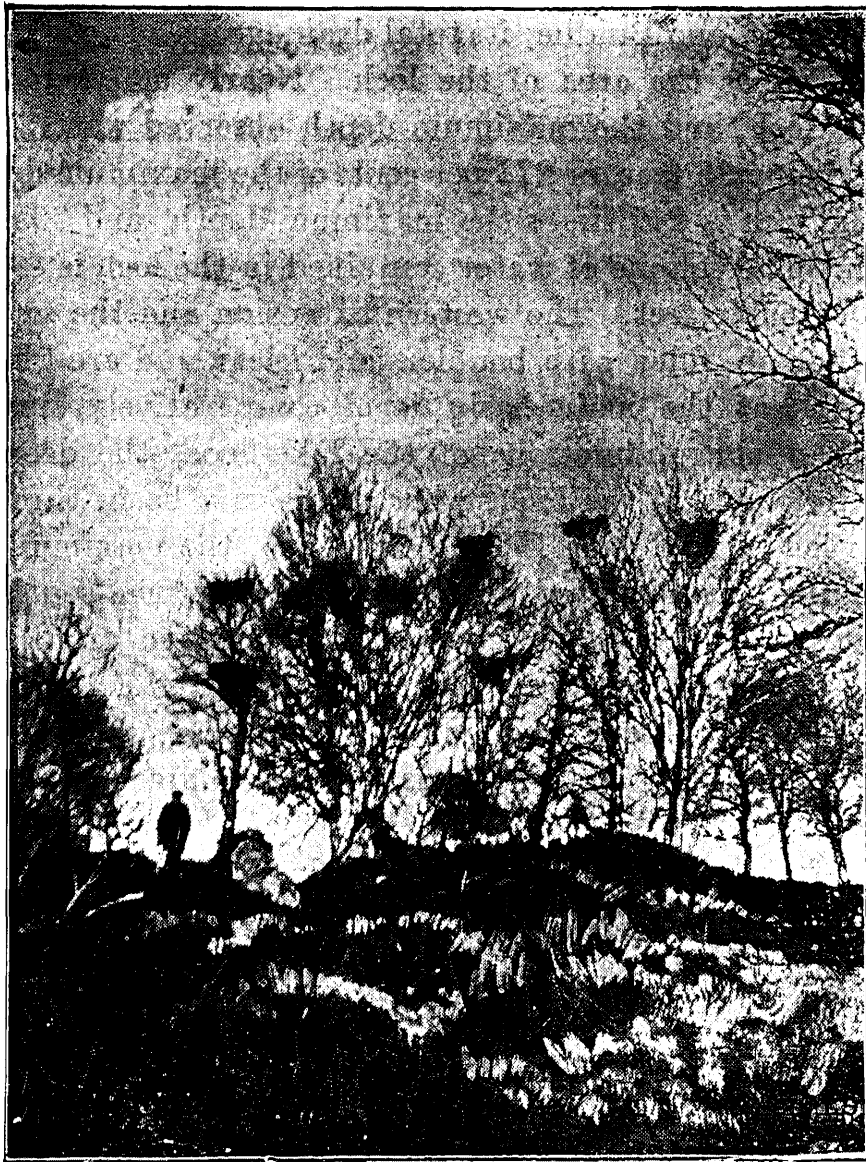


FIG. 17.—HERONS' NESTS ON EILEAN MOLACH IN LOCH BÀ.  
(*Photograph by T. N. Johnston, M.B., C.M., F.R.S.E.*)

this region were without boats and could not be sounded; they were evidently all quite shallow and of the same character as Loch Buidhe.

*Loch Laidon* (see Plate XVII.).—Loch Laidon (or Lydoch, or Luydan) lies partly in Perthshire and partly in Argyllshire, the boundary running along the centre of the western arm and for a certain distance up the main loch. It is one of the best trouting lochs