

feet (16 fathoms). The bulk of water contained in the loch is estimated at 321,000,000 cubic feet, and the mean depth at 36 feet (6 fathoms), or 37 per cent. of the maximum depth. The length of the loch is 68 times the maximum depth, and 183 times the mean depth.

The 50-foot depression is over two-thirds of a mile in extreme length, with a maximum width of about one-fifth of a mile, lying uniformly near the centre of the loch, and covers an area of about 64 acres, or 31 per cent. of the superficies of the loch. Within this area there is a depression occupying about 32 acres where the depths exceed 90 feet, the greatest registered depth (97 feet) being recorded in two places approximately in the centre of the loch. At the west end of the loch,

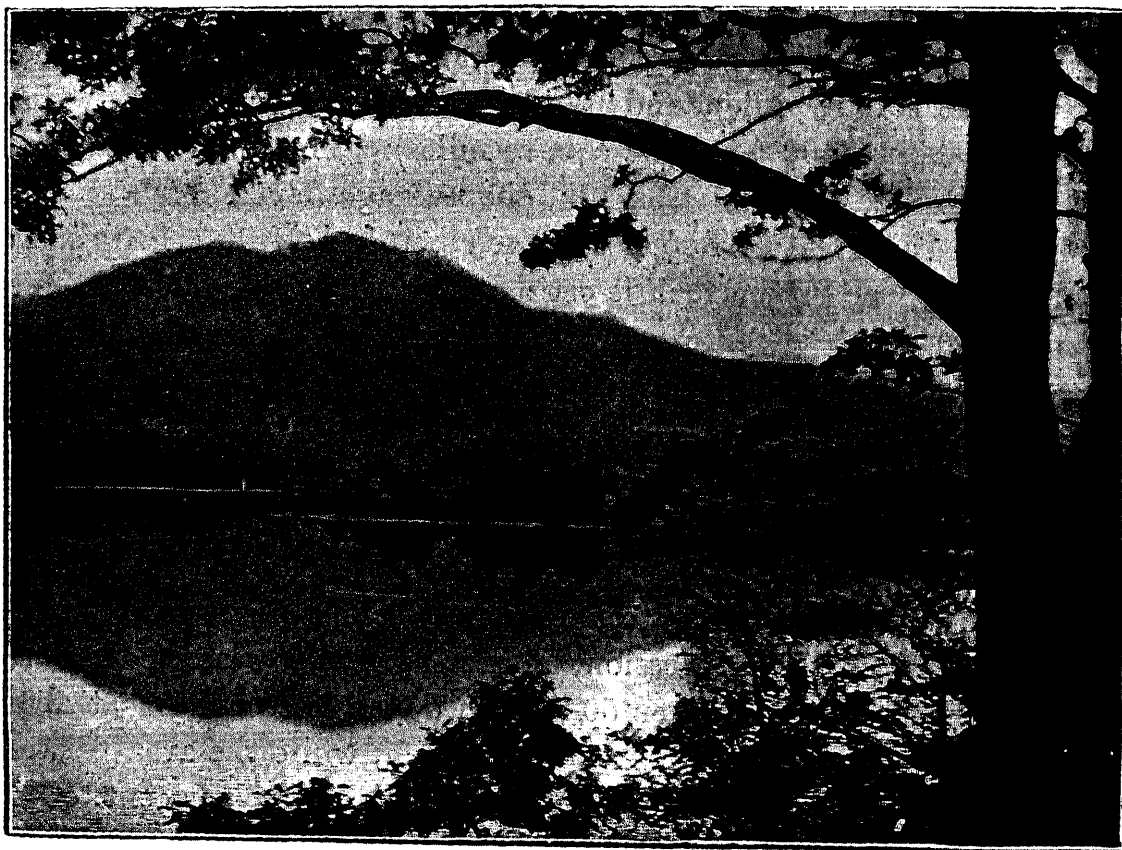


FIG. 5.—LOCH ACHRAY, LOOKING WEST TOWARDS BEN VENUE.

(*Photograph by J. Valentine.*)

not far from the hotel pier, a detached sounding of 50 feet is recorded ; off the mouth of the Achray water there are some shallow patches, and a shallow in the centre of the loch towards the west end, on which there are 2 to 3 feet of water, is marked by a beacon. The area less than 50 feet in depth is estimated at about 141 acres, or 69 per cent. of the total area of the loch. The eastern end of the loch is relatively shallow ; at one place there is a depression with 27 feet surrounded by shallower water, and at another place there is what appears to be a submerged crannog covered by only 1 or 2 feet of water.

*Loch Vennachar* (see Plate V.).—Loch Vennachar, the surface of