

Temperature Observations.—Temperature observations gave the following results:—

Surface	59°·0 Fahr.
10 feet	59°·0 ,,
11 ,,	58°·8 ,,
12 ,,	55°·8 ,,
13 ,,	55°·0 ,,

This series shows that the upper 10 feet of water had a uniform temperature, but between 11 and 12 feet there was a fall of 3°, the extreme range from surface to bottom being 4°.

Loch Freuchie (see Plate XXXI.).—Loch Freuchie (or Fraochie), near Amulree, is a very pretty loch amid pastoral scenery, the grassy

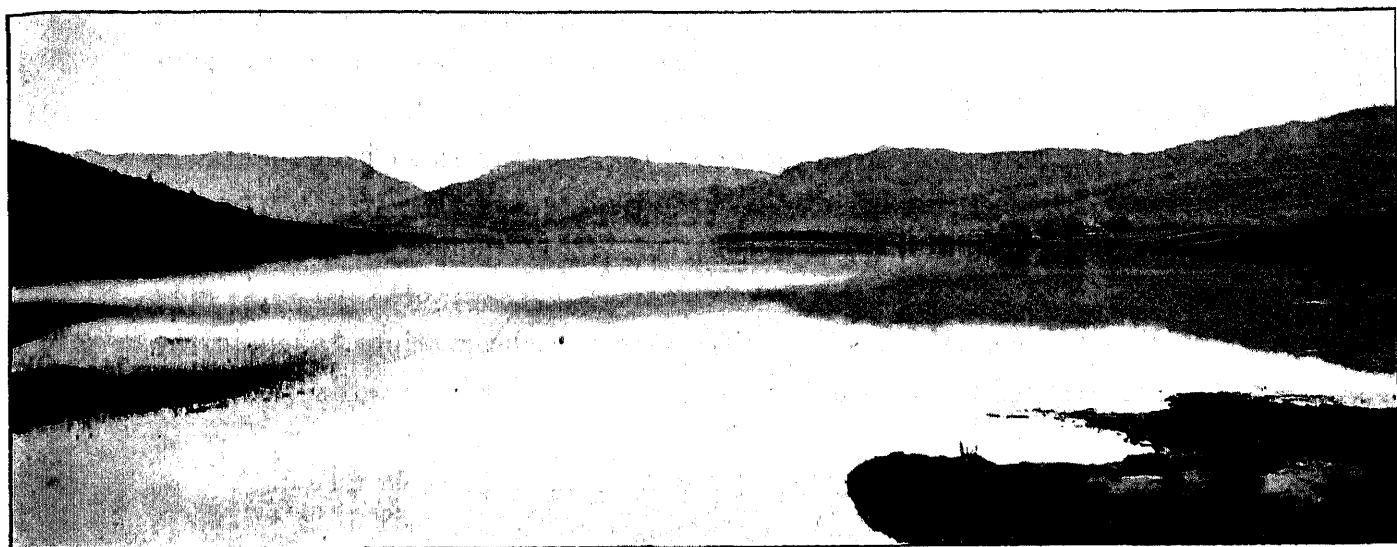


FIG. 25.—LOCH FREUCHIE, LOOKING S.E. FROM BRIDGE OVER INLET.

(Photograph by R. Dykes.)

shores sloping gently up on both sides, with here and there patches of wood. It was formerly a good trout loch, but in recent years it has been overrun by pike; steps have been taken, however, to keep down the pike, and the fishing is now improving. It flows by the river Bran into the river Tay at Dunkeld. Loch Freuchie trends in a north-west and south-east direction, widest in the north-western half and narrowing towards the south-east end. It is 1½ miles in length, with a maximum breadth of nearly half a mile, the mean breadth being about one-third of a mile, or 18 per cent. of the length. Its waters cover an area of about 348 acres, or over half a square mile, and it drains an area 55 times greater—an area of over 23 square miles. Nearly 90 soundings were taken, the maximum depth observed being 62 feet. The volume of water contained in the loch is estimated at 346,564,000 cubic feet, and the mean depth at 23 feet, or 37 per cent. of the maximum