

Achray) being 97 feet (16 fathoms). The bulk of water contained in the loch is estimated at 217,000,000 cubic feet, and the mean depth at 36 feet (or 6 fathoms), being 37 per cent. of the maximum depth. The length of the loch is 54 times the maximum depth, and 147 times the mean depth.

There are two depressions with depths over 50 feet: one at the extremity of the western arm, about a quarter of a mile in length, and the other filling up the greater part of the body of the loch, and extending some distance up the north-eastern arm, being over one-third of a mile in length and about one-quarter of a mile in maximum width. The area over 50 feet in depth is estimated at 43 acres, or 31 per cent.

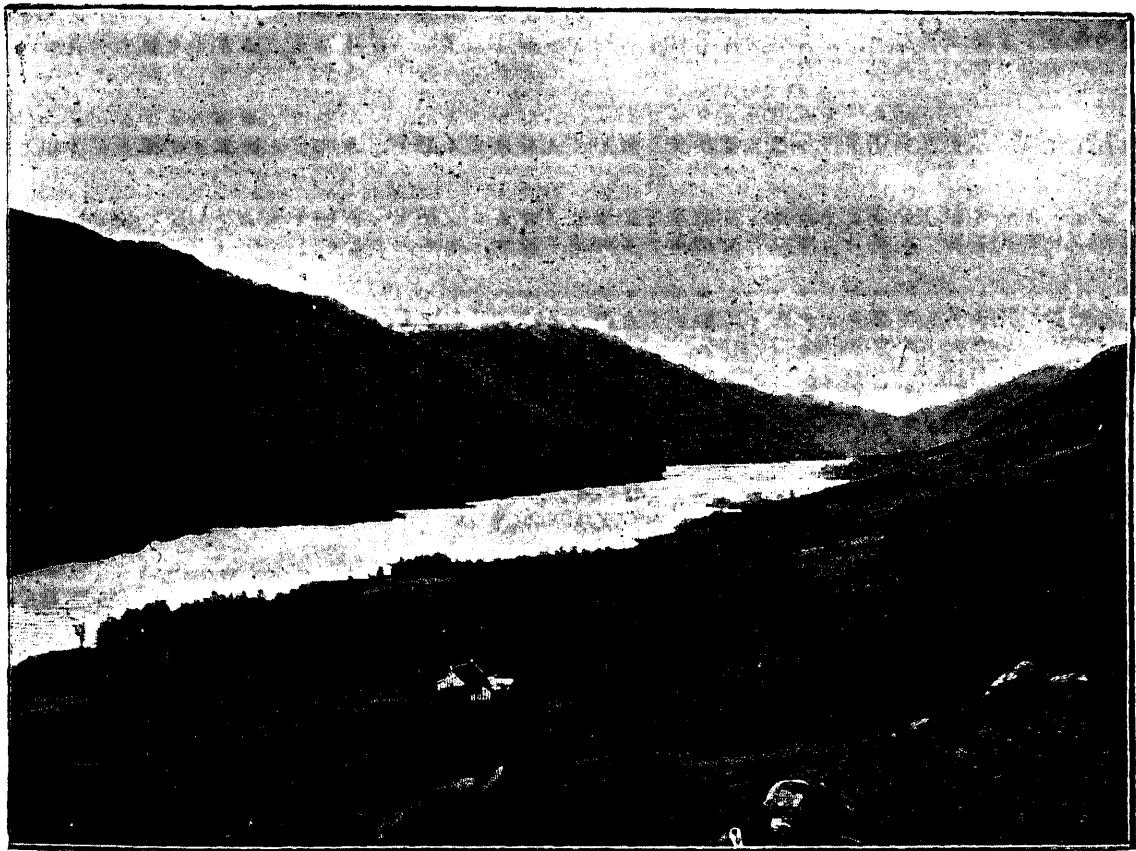


FIG. 7.—LOCHS VOIL AND DOINE, LOOKING WEST FROM ROB ROY'S GRAVE, BALQUHIDDER.
(Photograph by J. Valentine.)

of the total area of the loch, while the area between the shore and the 50-feet contour is estimated at 95 acres, or 69 per cent. of the area of the loch.

Lochs Voil and Doine.—These two lochs, the surfaces of which, according to the Ordnance Survey maps, are situated at an elevation of 414 feet above sea-level, formed at no very distant date a continuous loch, which has been divided into two portions principally by the deposition of material brought down Monachyle glen by the river; this is supported by the fact that deep water extends close up to the dividing promontory of land on both sides. The former continuous loch must